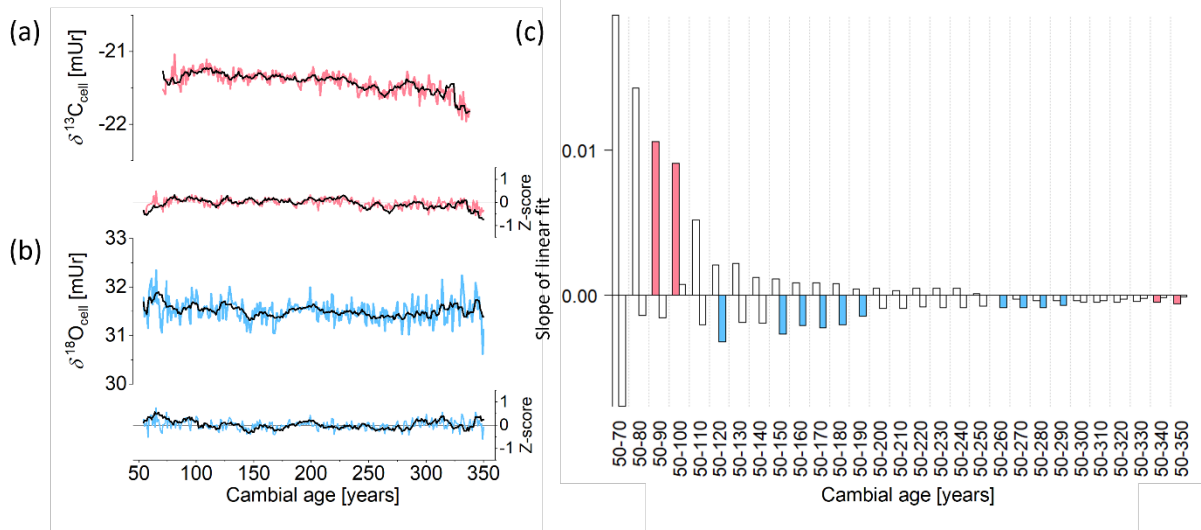
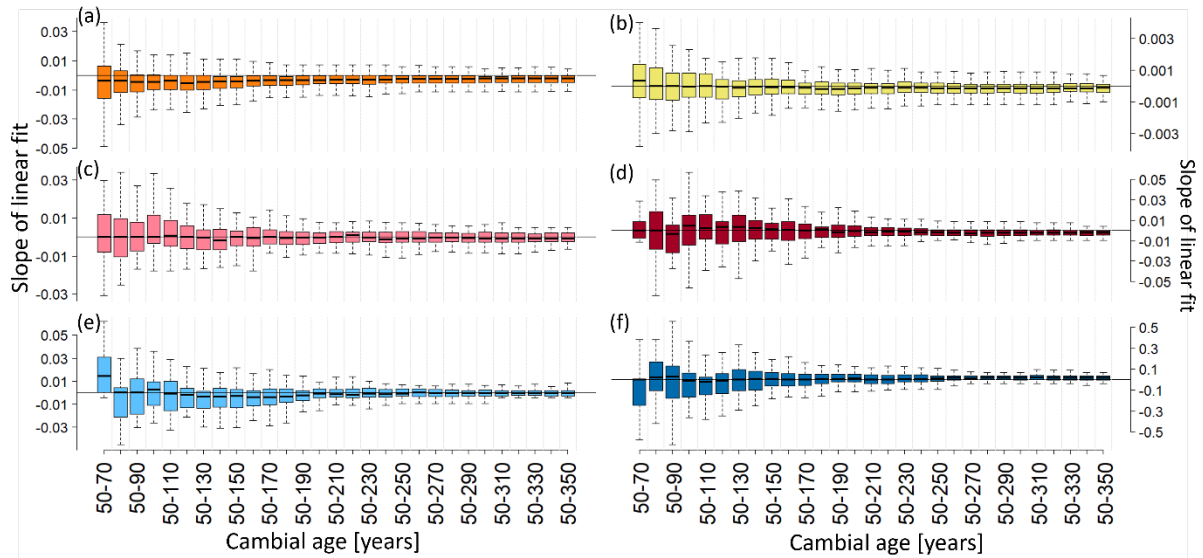


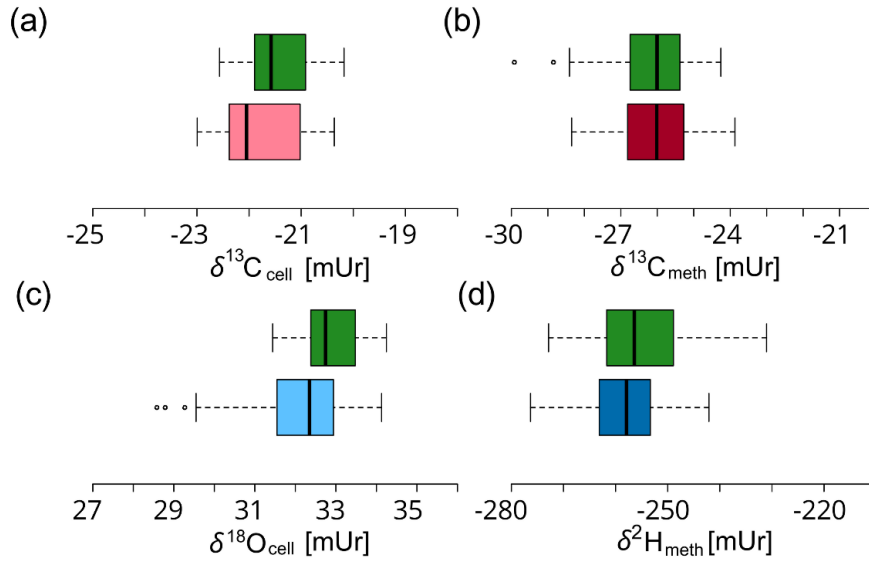
Supplemental material



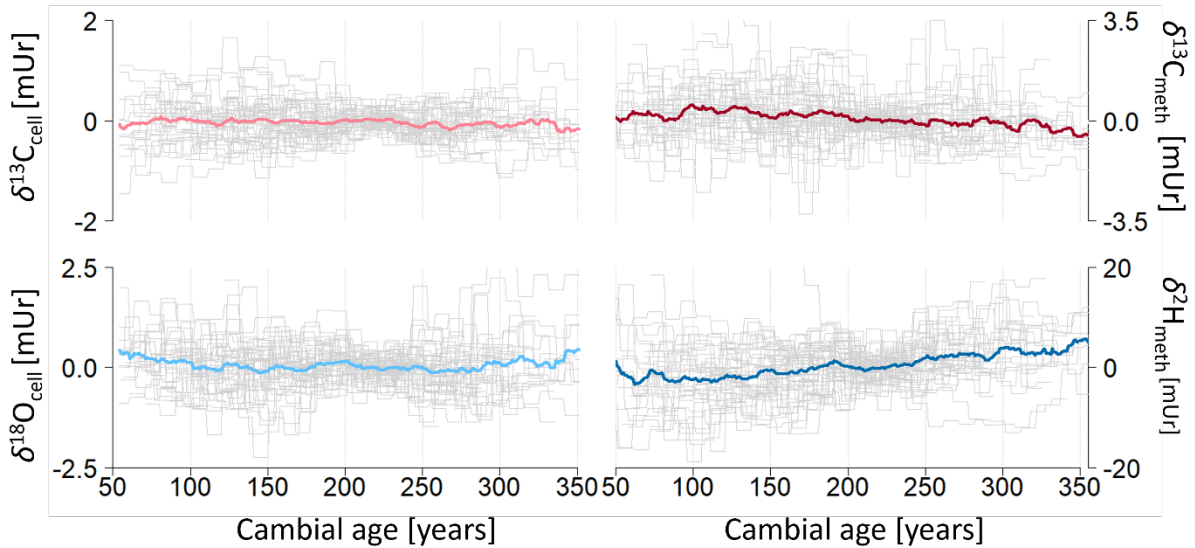
S1. Mean age-aligned (a) $\delta^{13}\text{C}_{\text{cell}}$ and (b) $\delta^{18}\text{O}_{\text{cell}}$ chronologies of the decadal (black line) and annual (colored lines) relict wood series. (c) Linear slopes of the mean z-transformed $\delta^{13}\text{C}_{\text{cell}}$ and $\delta^{18}\text{O}_{\text{cell}}$ series at annual resolution. White bars represent non-significant ($p > 0.01$) and coloured bars significant slopes at $p < 0.01$.



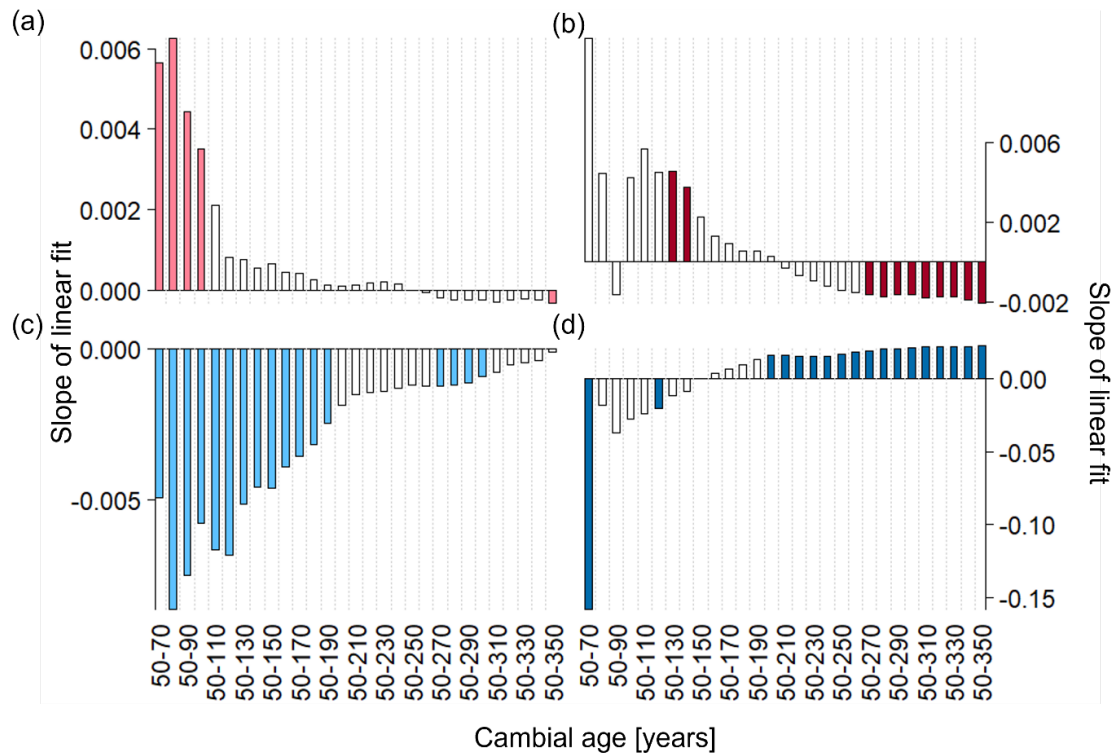
S2. Linear slopes (unit per decade) of the raw, cambial-age aligned (a) TRW, (b) MXD, (c) $\delta^{13}\text{C}_{\text{cell}}$, (d) $\delta^{13}\text{C}_{\text{meth}}$, (e) $\delta^{18}\text{O}_{\text{cell}}$, and (f) $\delta^2\text{H}_{\text{meth}}$ series. Horizontal black lines represent the median (50th percentile), boxes represent the 25th and 75th percentiles and whiskers represent the 95% confidence interval.



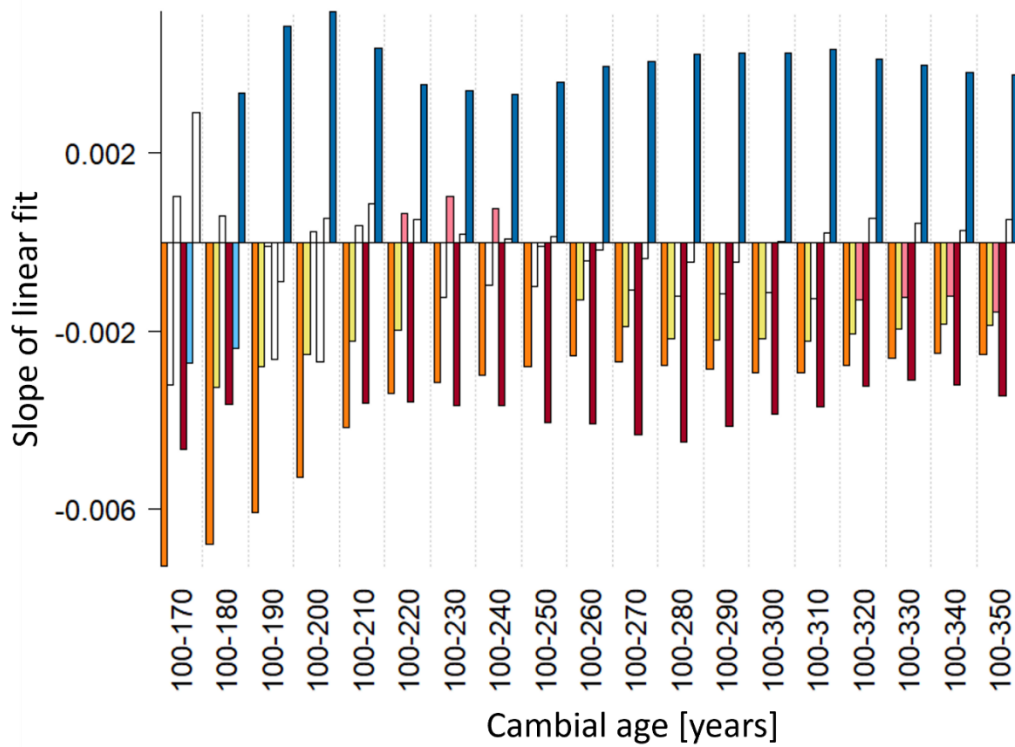
S3. Distribution and range of (a) $\delta^{13}\text{C}_{\text{cell}}$, (b) $\delta^{13}\text{C}_{\text{meth}}$, (c) $\delta^{18}\text{O}_{\text{cell}}$, and (c) $\delta^2\text{H}_{\text{meth}}$ values over the common period of living and relict wood (1641-1820 CE). Green boxes correspond to the living trees, while other colours represent the proxy-specific relict wood. Vertical black lines represent the median (50th percentile), boxes represent the 25th and 75th percentiles, whiskers represent the 95% confidence interval, and points denote outliers.



S4. Relative cambial age aligned $\delta^{13}\text{C}_{\text{cell}}$, $\delta^{13}\text{C}_{\text{meth}}$, $\delta^{18}\text{O}_{\text{cell}}$, and $\delta^2\text{H}_{\text{meth}}$ relict wood series. Relative TRSI values of individual series were calculated by subtracting the mean of the common period 202 - 238 years. Colored lines represent the arithmetic mean of the relative series.



S5. Linear slopes (unit per decade) of mean relative (a) $\delta^{13}\text{C}_{\text{cell}}$, (b) $\delta^{13}\text{C}_{\text{meth}}$, (c) $\delta^{18}\text{O}_{\text{cell}}$, and (d) $\delta^2\text{H}_{\text{meth}}$ series. White bars represent non-significant slopes ($p > 0.01$) and colored bars represent significant slopes at $p < 0.01$.



S6. Linear slopes of the mean z-transformed TRW (orange), MXD (yellow), $\delta^{13}\text{C}_{\text{cell}}$ (light red), $\delta^{13}\text{C}_{\text{meth}}$ (dark red), $\delta^{18}\text{O}_{\text{cell}}$ (light blue), and $\delta^2\text{H}_{\text{meth}}$ series. White bars represent non-significant ($p > 0.01$) and coloured bars significant slopes at $p < 0.01$.



S7. Example of a relict wood fragment where a disc sample was taken from unknown tree height.