

## Supplementary Materials

### Assessment of larch non-stationary growth responses in forest-tundra and southern taiga in Central Siberia

Alexander V. Kirdyanov<sup>1,2,3</sup>, Alberto Arzac<sup>3</sup>, Anatoly S. Prokushkin<sup>2,3</sup>, Dmitriy V. Ovchinnikov<sup>2</sup>, Alexander I. Bondarev<sup>2</sup>, Pavel P. Silkin<sup>4</sup>, Tatiana Bebhuk<sup>1</sup>, Jan Esper<sup>5,6</sup>, Ulf Büntgen<sup>1,6,7</sup>

<sup>1</sup>Department of Geography, University of Cambridge, CB2 3EN, UK

<sup>2</sup>Sukachev Institute of Forest SB RAS, Federal Research Center 'Krasnoyarsk Science Center SB RAS', Akademgorodok, Krasnoyarsk, 660036, Russian Federation

<sup>3</sup>Siberian Federal University, 79 Svobodnii, Krasnoyarsk, 660041, Russian Federation

<sup>4</sup>Institute of Geography RAS, 29 Staromonetnyi Lane, Moscow, 119017, Russian Federation

<sup>5</sup>Department of Geography, Johannes Gutenberg University, 55099, Mainz, Germany

<sup>6</sup>Global Change Research Centre, 61300 Brno, Czech Republic

<sup>7</sup>Department of Geography, Masaryk University, 61137 Brno, Czech Republic

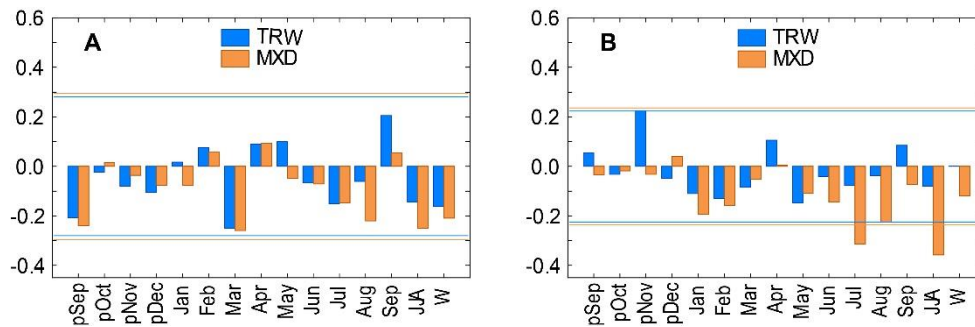


Fig. S1. Climate signals. Correlation coefficients of the standardized TRW and MXD chronologies with monthly and seasonal precipitation totals from previous-year to current-year September of ring formation in the forest-tundra (A) (since 1929) and southern taiga (B) (since 1871) sites. Seasonal means were calculated for total summer (JJA) and the season with mean monthly temperature below 0 °C (w, from previous year September to current year May in forest-tundra and from previous October to current May in southern taiga). Horizontal lines indicate significance level  $P < 0.01$

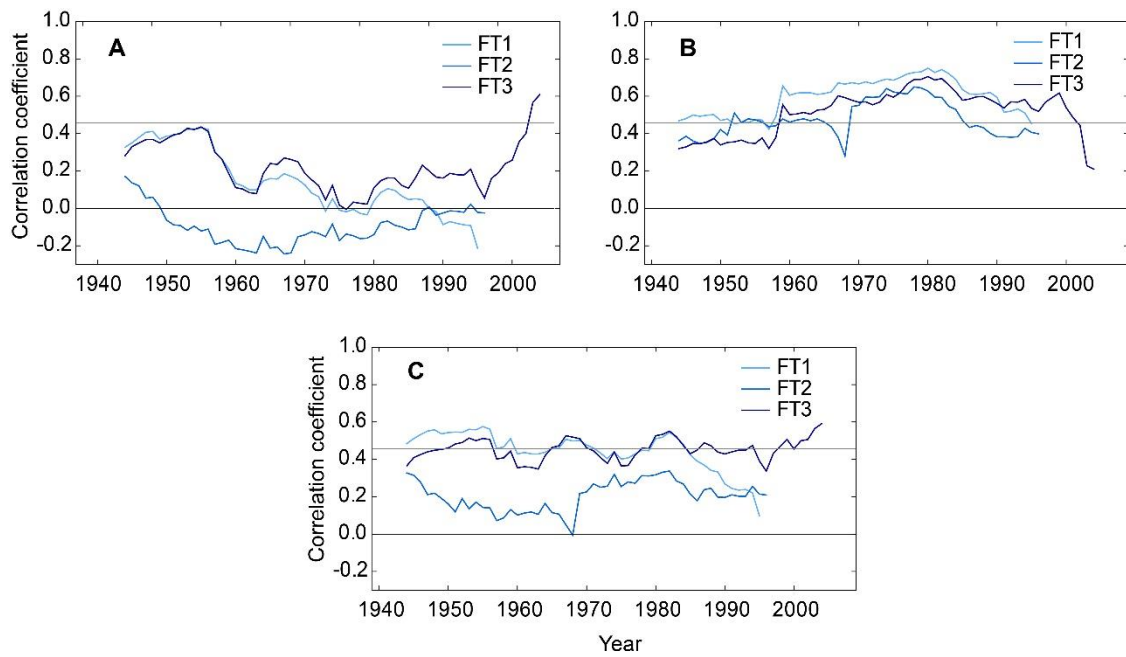


Fig. S2. 31-year window running correlations between the local tree-ring width (TRW) standard chronologies and June (A), June – July (B) and summer (JJA) (C) temperature means for the forest-tundra sites FT1, FT2 and FT3. Gray horizontal line indicates the significance level  $P < 0.01$ .

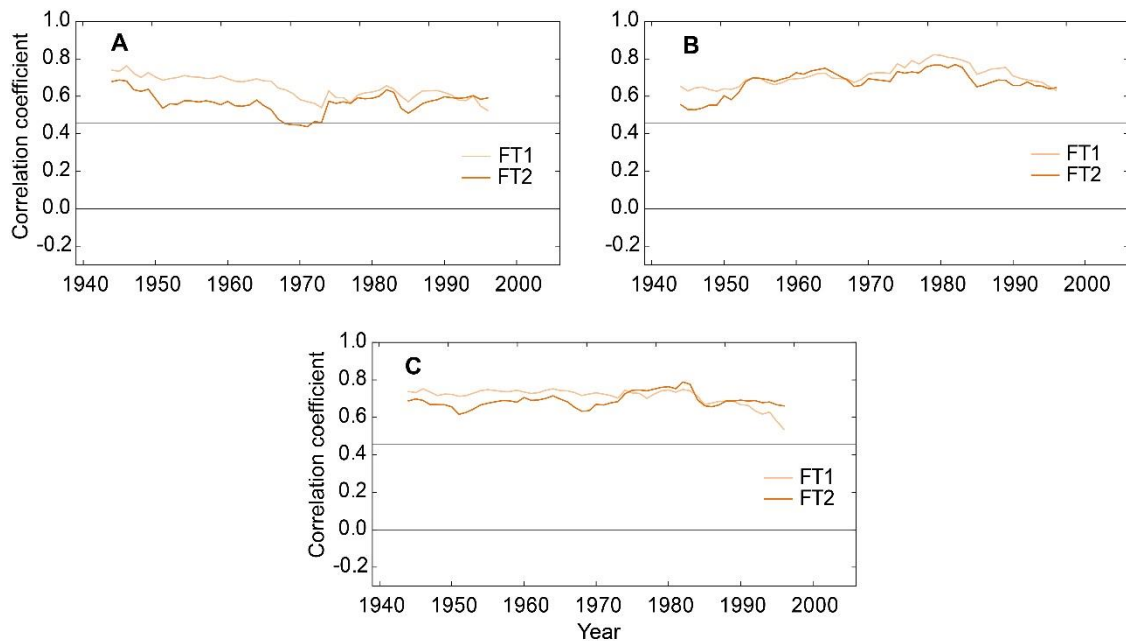


Fig. S3. 31-year window running correlations between the local maximum latewood density (MXD) standard chronologies and June – July (A), July – August (B) and summer (JJA) (C) temperature means of the forest-tundra sites FT1 and FT2. Gray horizontal line indicates the significance level  $P < 0.01$ .

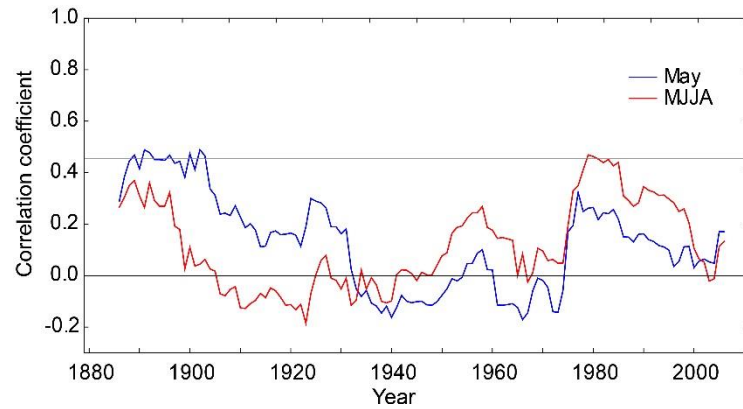


Figure S4. 31-year window running correlations between the local tree-ring width (TRW) standard chronologies and May and May – August (MJJA) temperature means in southern taiga. Gray horizontal line indicates the significance level  $P < 0.01$ .

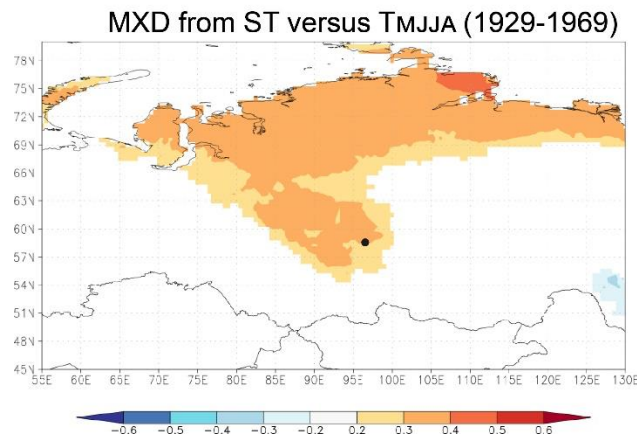


Figure S5. Spatial correlations. Correlation fields of the maximum latewood density (MXD) standard chronology with warm months (from May to August) temperature means at the southern taiga site ST from 1929 – 1969