

Supplementary figures for:

Constraining the 19th century temperature baseline for global warming

L. Schneider^{1,2*}, O. Konter³, J. Esper^{3,4} and K.J. Anchukaitis^{5,6}

¹*Department of Geography, Justus-Liebig-University, Giessen, Germany*

²*Center for international Development and Environmental Research, Justus-Liebig-University, Giessen, Germany*

³*Department of Geography, Johannes Gutenberg University, Mainz, Germany*

⁴*Global Change Research Institute of the Czech Academy of Sciences (CzechGlobe), Brno, Czech Republic*

⁵*School of Geography, Development, and Environment, University of Arizona, Tucson, AZ, USA*

⁶*Laboratory of Tree-Ring Research, University of Arizona, Tucson, AZ, USA*

*Corresponding author: lea.schneider@geogr.uni-gießen.de

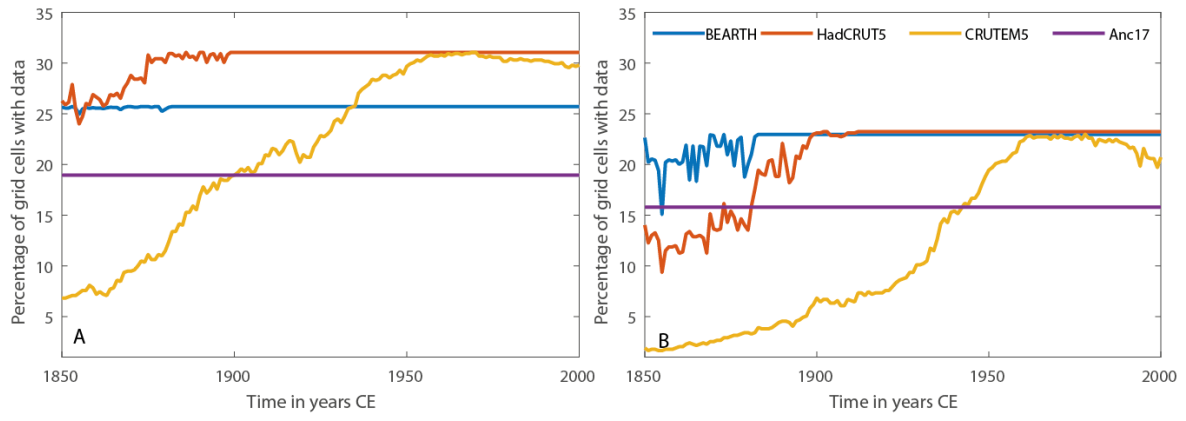


Fig. S1: Number of available gridcells over time in the observed and reconstructed temperature fields. (A) For mid latitudes between 35-60°N. (B) For northern latitudes between 60-90°N.

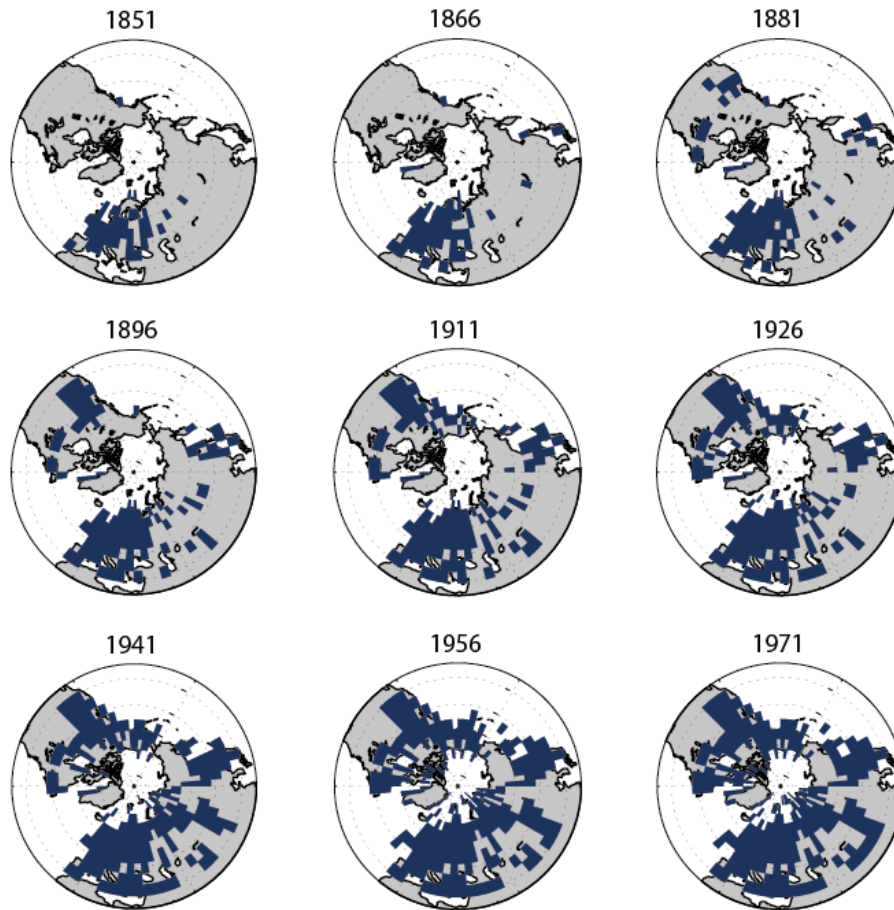


Fig. S2: Examples of grid masks for harmonizing coverage between different temperature datasets. The masks represent the overlapping fraction between CRUTEM5 and Anc17 at different time steps. The actual masks are updated on a year-to-year basis. After 1971 the extend of the masks is not changing anymore.

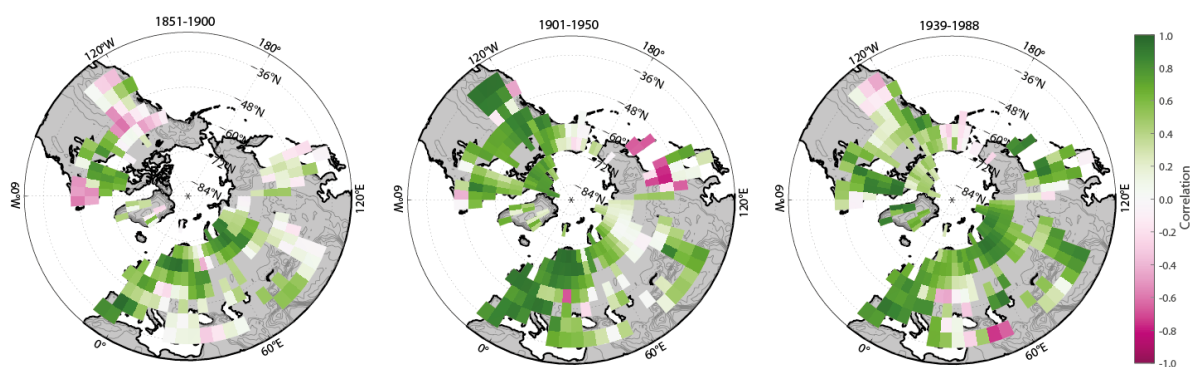


Fig. S3: Correlation between lowpass filtered reconstructed (Anc17) and instrumental (BEST) fields for different time intervals. Colours indicate Pearson correlations calculated from (a) 1851-1900, (b) 1901-1950 and (d) 1939-1988.

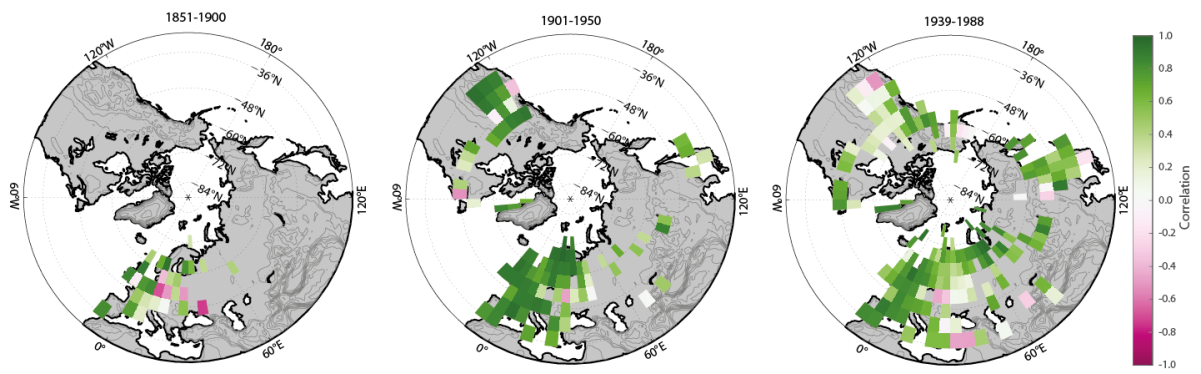


Fig. S4: Correlation between lowpass filtered reconstructed (Anc17) and instrumental (CRUTEM5) fields for different time intervals. Colours indicate Pearson correlations calculated from (a) 1851-1900, (b) 1901-1950 and (c) 1939-1988.